

OEC Shark Tank Specification Sheet



12,000L – 24,000L Food Grade Bottom Load/Discharge



- Temperature range: Min 0°C (32°F) Max 60°C (140°F)
 - 4 plys 125±10mic PE film
 - 1 ply 180± 5gsm tubular PP
 - 1 pc valve reinforcement plate

2 Piece Steel Frame Bulkhead

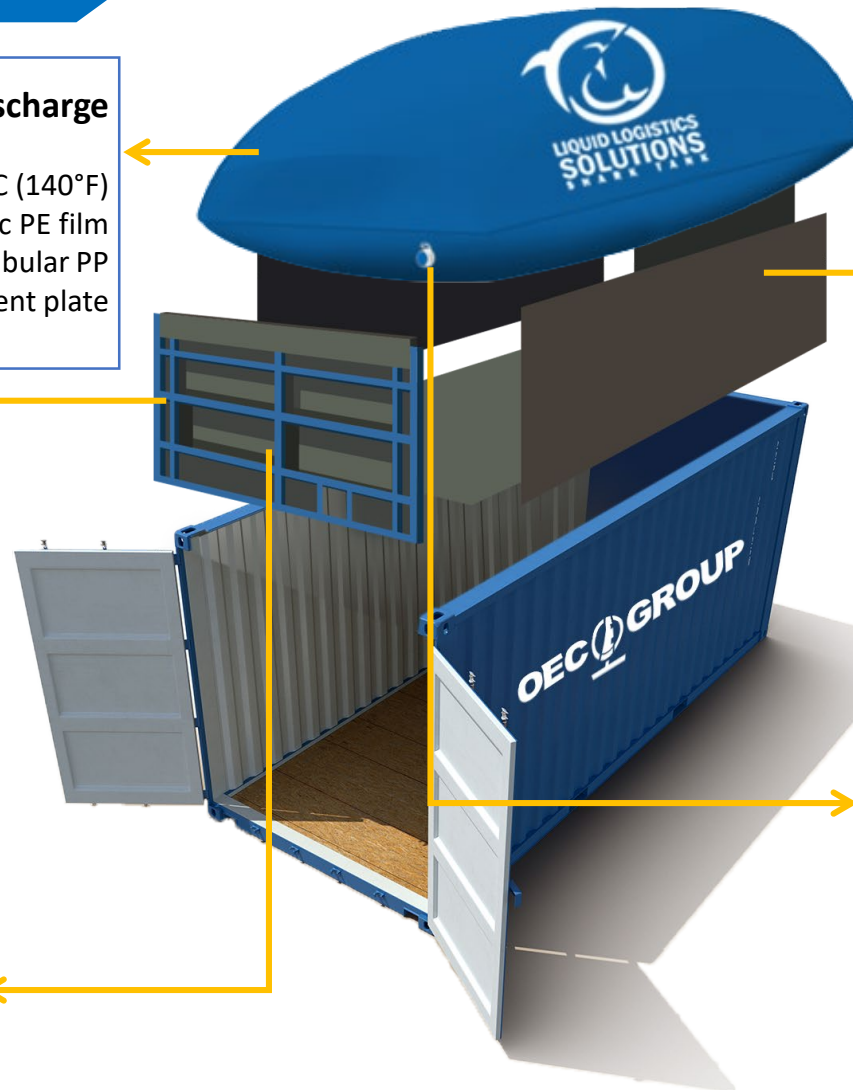
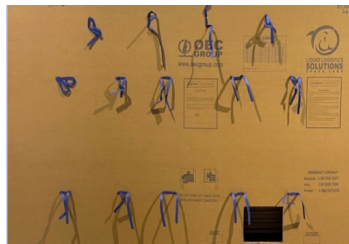


50X50X2.0mm
Dimension: 2pcs rigid frames 2330x700mm,
Cross-section: 50x 50mm

Corrugated Cardboard Backing

Dimensions:

- Height:1500(+200mm flat wing)
- Length: 2330mm
- Thickness:18mm



Container lining



✓ Polyethylene HDPE
Magnetic
Container Lining

✓ Liner locks into
backing plate

Valve with Internal Elbow

Valve Type	Front View	Side View	Anti-Suction Plate
3" Ball Valve with Elbow System Material: PP			

PE Film Parameter		PP Woven Fabric Parameter		
Test Item		Unit	Test Method	Standard
Thickness		mic	/	125±10
Dart Drop		g	ASTM D1709	≥1300
Tensile Strength (Warp / Weft)		MPa	ASTM D882	≥32
Elongation at Break (Warp / Weft)		%	ASTM D882	≥650
Tear Strength (Warp / Weft)		N	ASTM D1004	≥11
Yield Strength (Warp / Weft)		MPa	ASTM D882	≥9.0
Heat Seal Strength	8+2	N	ASTM D882	≥90.0
Small Holes after Rub Test	Maximum	pc	ASTM F392	≤12
Gram Weight		g/m2	GB/T 13762	180±5
Density		pc of thread/ inch	GB/T 13762	14X14
14X14 Strength	Warp	N/50mm	ASTM D5035	≥1700
	Warp	N/50mm	ASTM D5035	≥1700
Elongation at Break		%	ASTM D5035	15~25
Stitched Line Strength		N/50mm	ASTM D5035	≥1000



OEC Group Liquid Logistics Solutions
16910 Texas Ave., Suite B-1, Webster, TX 77598 TEL: 832.763.8609